

F 72

.B5 A5













661 1/2 6  
1909

# Among the Berkshire Hills

**L**OCATED about one hundred and fifty miles from Boston, THE BERKSHIRE HILLS, the home of the most widely-known and picturesque residential district in the United States, rise like a mighty rampart along the western frontier of Massachusetts. Here wooded landscape, crested slope and pinnacled top, swept by cooling breezes from every point of the compass, gain a distinctive charm from the presence of many enchanting lakes, large and small, glimmering through the luxuriant foliage like bits of blue sky brought down to Mother Earth.

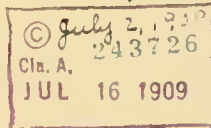
In the very heart of this delightful country, on a plateau over one thousand feet above the level of the sea, lies the enterprising city of Pittsfield, famous in the world of business for many industries here firmly established, and with an international reputation for its unparalleled attractions as the dominating metropolis of the Berkshire region. From this city radiate splendid roads in every direction, winding throughout the historic hills and valleys—the charm of which has enthralled travelers of every generation, from the venturesome settler of early times to the passing motorist of today.

As a summer resort Pittsfield stands second to none. It occupies a commanding position in the forefront of American cities where fresh air and beautiful surroundings contribute to the enjoyment of the health or pleasure-seeker. The Summer Colony comes early and stays late. Hundreds of business men find a week-end spent amid the picturesque and sublime Berkshires a fitting preparation for a renewal of energy to engage the problems of the factory, office or market during the days of work to come.

The Berkshires are secure in the unstinted admiration of thousands of sincere worshippers, scattered the world over. No American who has once felt the charm and mystery of their deep woods, their storied lakes, their Indian legends and associations and, above all, the blazing beauty of their Autumn foliage, will ever concede that these inspiring Hills are surpassed or even equalled by any foreign rival.

PUBLISHED BY THE KENNEDY-MACINNES CO., PITTSFIELD, MASS.

COPR., 1909, BY L. H. NELSON CO., PORTLAND, ME.



F92  
B5A5



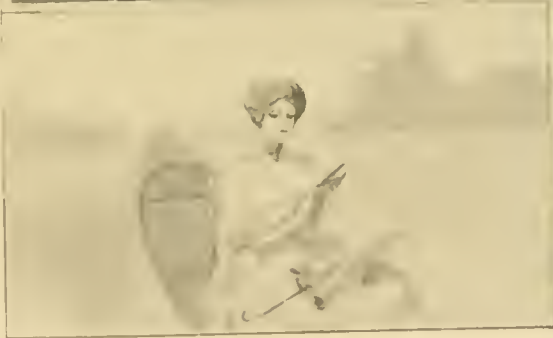
MONUMENT MOUNTAIN

From Great Barrington. One of the best known of the Southern Sentinels of the Berkshire Hills.





MAIN STREET, GREAT BARRINGTON  
The thriving business town and summer resort of Southern Berkshire.



**THE HOUSATONIC RIVER AT STOCKBRIDGE**

One of a thousand similar beauty spots on this charming little river, where light and shade sport their strong contrasts upon the rippling waters.

**GLENDALE CURVE BELOW GLENDALE**

The New York, New Haven & Hartford Railroad describes a complete S in winding its way among the overshadowing hills.





**INDIAN MONUMENT AND BURYING GROUND, STOCKBRIDGE**  
Erected to the memory of "The Friends of our Forefathers" as the inscription states—the Stockbridge Indians—who formerly had their village in this most attractive of all Berkshire beauty nooks.



ENTRANCE TO ICY GLEN, STOCKBRIDGE

The natural "Gateway" to the wildest heap of rocks that Titans in their sport might have hurled at one another. It is said that ice may be found in this Glen on summer's hottest day—hence its name. The torchlight procession through the Glen on Labor Day is one of the most enjoyable social features of the summer colony.



DRIVES IN THE ASPINWALL GROUNDS, LENOX

Leading direct to the highest located hotel in the Berkshires. Built on the edge of a cliff and giving a commanding view of the country. Formerly the Wolsley Place. Its grounds are noted for magnificent wood drives.





THE THREE BRIDGES AT LENOXDALE

Where railroad, highway, trolley and river meet and cross. These bridges are an interesting feat of engineering and form "one of the sights" of "down the county" trolley trips.



#### SHADOWBROOK, LENOX

This charmingly situated building was formerly the residence of Anson Phelps Stokes of New York, and later, was used as a hotel. It commands a delightful and most extensive view of lake and country.

#### LAKE MAHKEENAC FROM SHADOWBROOK GROUNDS

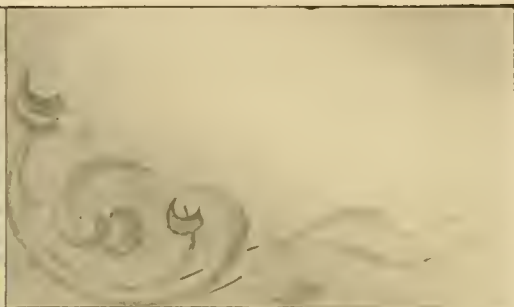
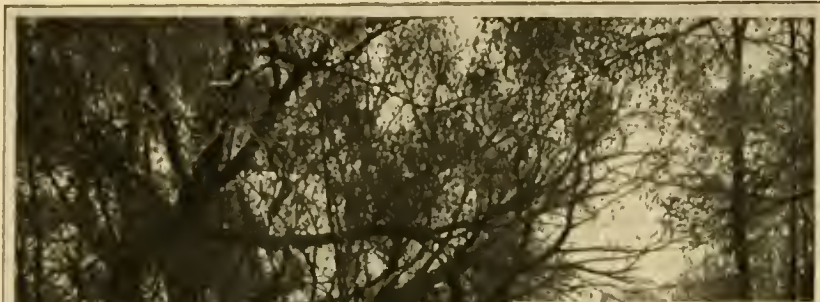
Otherwise known as Stockbridge Bowl—a "bowl" lined with gold in the mid-day sunlight, with silver at night beneath the moon's soft light. Hill-sheltered and tree-fringed, this beautiful lake is headquarters for the aquatic sports of Lenox and Stockbridge summer visitors.



MAIN STREET, LENOX

Showing the Soldiers' Monument and the famous Curtiss Hotel, one of Berkshire's oldest and most celebrated hostelries.





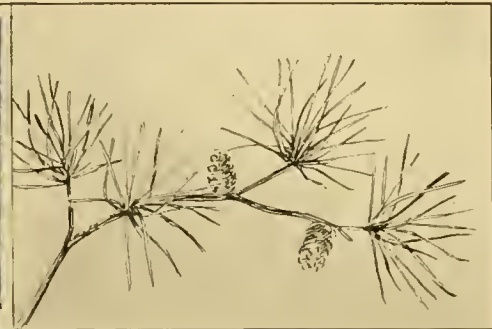
**EARLY SPRING ON THE HOUSATONIC RIVER**

Another characteristic view on this river of many windings—the foliage showing its first response to the whispering voice of returning Spring.

**LOOKING UP THE VALLEY FROM BERKSHIRE PARK, PITTSFIELD**

Road, railway, trolley and lake combine with Nature to make this a place of beauty and interest. On clear days Greylock may be seen in the distance, towering above the scene.





**HOTEL MAPLEWOOD AND FOUNTAIN, PITTSFIELD**

A splendid Berkshire Hotel of the solid comfort type, and the Berkshires have many such. The feeling of "home" reigns in its corridors and rooms, and its perfect service, the result of long years' experience, makes it a delightful place in which to spend the summer months. The building was formerly The Maplewood Institute, an exclusive school for young ladies.

**LOOKING DOWN SOUTH ST., PITTSFIELD, SHOWING WENDELL HOTEL**

Situated in the "Heart of the Berkshires", to quote its genial and progressive proprietor's advertising phrase. On this street are many fine residences, the Colonial Theatre and the South Church, also the Museum of Art, the splendid gift of Mr. Zenas Crane of Dalton.



**SOLDIERS' MONUMENT AND PARK, PITTSFIELD**

In the center of the Metropolis of the Berkshires. Around the Park cluster the City's public buildings, as well as many historic landmarks and tributes to the great men of the Berkshires. From the Park, as a center, radiate the broad business and residential streets—North, South, East and West.





**THE ATHENEUM AND COURT HOUSE, PITTSFIELD**

This handsome building and library, a "Tribute to Science, Art and Literature", is the gift of Thomas Allen to his "Native Town", 1876. The inscription over the doorway modestly tells the story of Mr. Allen's public spirited munificence.



THE LONGFELLOW HOUSE, PITTSFIELD

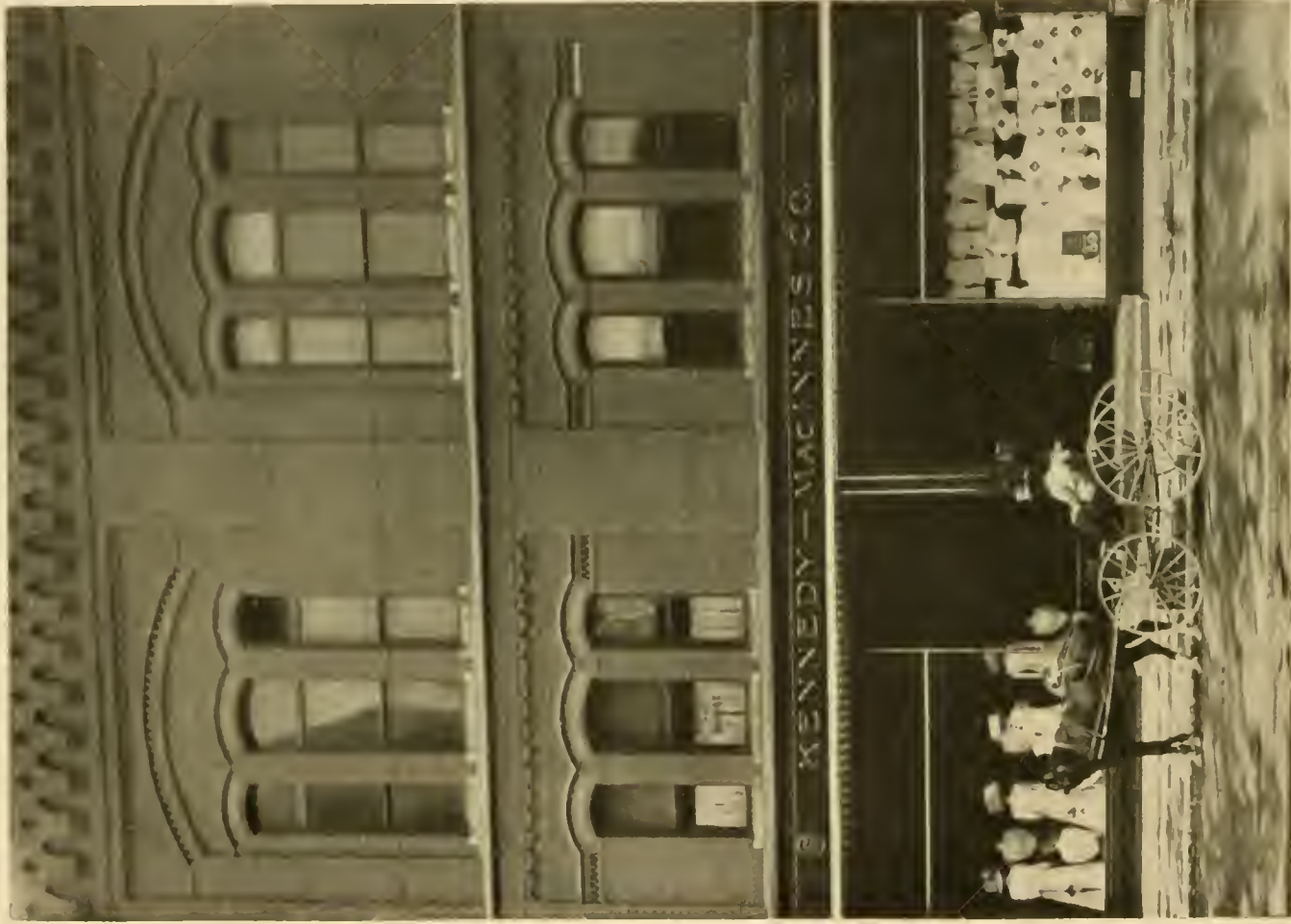
On East Street; the house in which the poet courted his wife and in which he spent his honeymoon. Standing "somewhat back from the village street" its location was perpetuated by him in "THE OLD CLOCK ON THE STAIRS" which still ticks on in its accustomed place.





WEST STREET, PITTSFIELD, LOOKING TOWARD THE DEPOT

One of Pittsfield's older streets. During the past ten years almost entirely rebuilt and asphalt paved—a broad, busy thoroughfare.



THE KENNEDY-MACINNES CO. STORE, PITTSFIELD

Surprisingly rich in thoroughly modern mercantile establishments of all kinds, Pittsfield has no more conspicuous example of her progressive spirit to offer than this, her GREATEST DEPARTMENT STORE. Equipped with every modern convenience and up-to-date feature, the public service it renders is of the most comprehensive kind. Situated on North Street in the very center of the business section, you cannot miss it.



**FIRST CONGREGATIONAL CHURCH, PITTSFIELD**

On the north side of the Park, one of the most historic ecclesiastical edifices in Massachusetts, its records twining closely around the roots of Congregationalism. East of the First Church is the City Hall, and beyond is St. Stephen's Episcopal Church, another beautiful ivy-clad building.





NORTH STREET, PITTSFIELD

Looking north. On this broad thoroughfare are located Pittsfield's great mercantile establishments, its Post Office, banks, American House and Maplewood Hotels, Baptist, Unity and St. Joseph's Roman Catholic Churches; at its north end it becomes residential. Pittsfield is a city of paved streets and fine houses; has remarkably good trolley facilities, and while a popular summer resort, is at the same time a hustling business center of many manufacturing interests.





PITTSFIELD DEPOT FROM THE TRACKS

Taken from the northwest. Pittsfield is rich in railroad communications—with through trains to the East and West every few hours, over the Boston & Albany Road; reaching New York and the South by way of the N. Y. C. Harlem Division; New York and Connecticut by the N. Y., N. H. & H. Road and its many branches.



ONOTA LAKE, PITTSFIELD

Taken from West Street and showing in the extreme distance Greylock Mountain. From no point of view can a comprehensive picture of this beautiful sheet of water be obtained—its shores are generally wooded and the Taghconic range rises to considerable height along its western shore. The lake is easily accessible from Pittsfield by road and trolley.



**WAHCONAH FALLS, WINDSOR**

A mile and a half from the trolley line at Dalton. The encircling woods with their cool shadows, the rugged rocks with many a rough hewn seat around, the splash and murmur of the brook, invite the visitor to spend the hot hours of the Summer day restfully and in cool comfort.



**PETTIBONE FALLS, FARNHAM'S**

Perhaps the wildest spot in Berkshire County; a Highland Glen in miniature—the cascade and pool are hemmed in by huge rocks that seem as though they were about to fall at any moment—the Glen lies about half a mile back from the trolley line at Farnham's and is easily reached by a footpath up the brook.





#### SHAKER SETTLEMENT, WEST PITTSFIELD

One of the many communities of this "quiet life loving" people; best reached by the B. & A. Railroad Station, West Pittsfield. Not as numerous as formerly, the Shakers still abide by their quaint customs of worship and maintain the principles of celibacy and community interest. A noted branch of their industries is the manufacture of Shaker Cloaks.



THE DAM AT BEL AIR, PITTSFIELD

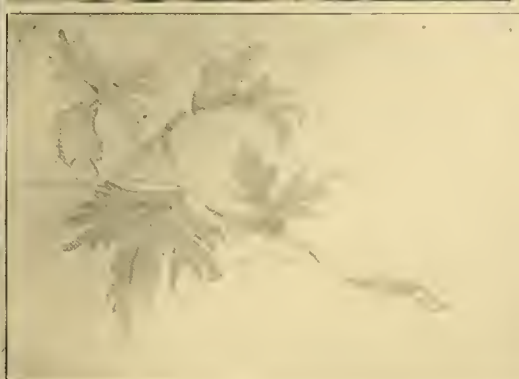
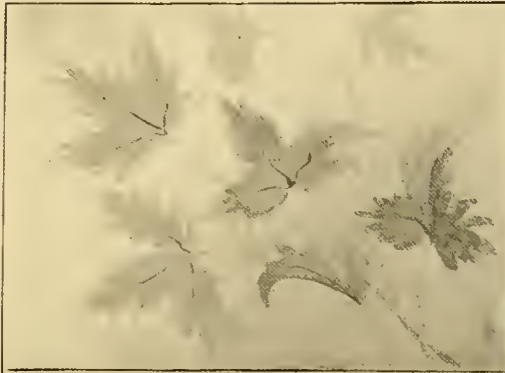
Just a prosaic mill dam—that's all! but, containing in its surroundings of foliage, its tumble of rock, with its miniature sister cascade, all the elements of romance, befitting the falling waters of a scene more retired; seen in the quiet of the early morning its beauties are impressive.



BALANCE ROCK, LANESBORO

A sight that everyone goes to see. A mile or so from the western shore of Pontoosuc Lake, it makes a pleasant afternoon's tramp through deep pine woods; or may be reached by road.





#### THE OUTLET, PONTOOSUC LAKE

Showing the Pittsfield Street Railway Car Station—canoeing at Pontoosuc is the sport of summer days and moonlight nights.

#### PONTOOSUC LAKE, PONTOOSUC

Two miles from Pittsfield on the Pittsfield Street Railway. It is naturally the city's great summer resort. The Pittsfield Boat Club seen on the right, Y. M. C. A. Canoe Club further up the same shore; Bath House on the South Shore; innumerable launches and a large steamer, picnic groves and private cottages on every hand, are a few of its leading enjoyments.



MAIN STREET, LANESBORO

This beautiful street is on the line of the Pittsfield Street Railway to Cheshire and North Adams. Lanesboro was the home of the humorist Henry W. Shaw, and here, in its little cemetery, his quiet resting place is marked with a rough-hewn Berkshire boulder, simply inscribed "Josh Billings", the name by which all who knew his quaint writings love to think of him.

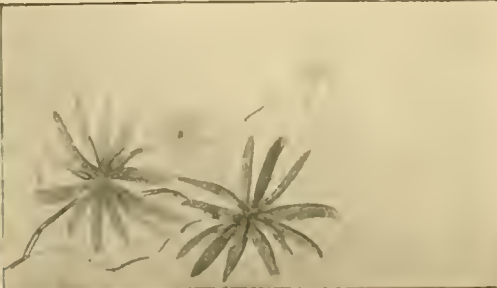




**SPLIT ROCK, LANESBORO**

A curious specimen of Nature's handiwork and an illustration of the tremendous power of growth—the tree has literally split the huge rock in twain; found a few hundred yards beyond Balance Rock. In the same field also is Cross Rock, another curio in stone.





#### STONE BRIDGE ON THE ROAD TO GREYLOCK

Climbing Greylock is one of the novel experiences of summer life in the Berkshires. Leaving the Berkshire trolley cars at Cheshire Harbor thousands of people follow the road passing over this bridge each season and later follow the trail through the cool woods up the Mountain's gentlest slope—in no place is the climb exhausting and the view from the Mountain's summit well repays the exertion.

#### SCENE IN CHESHIRE HARBOR

No historic interest to this, none is needed, only a little corner among the hills where stream, road, railroad and bridge combine in a picture of beauty to gladden the tired eye.



MAIN STREET, NORTH ADAMS

North Adams is the northern business city of Berkshire County. Extensive manufactures center here, notable among them The Arnold Print Works. Surrounded by high hills, the city is an admirable starting point for many a pleasant "Nature" excursion, the Cascade and Natural Bridge are among the best known. Several good hotels, paved streets, especially good car service, both steam and trolley, tend to make this an enterprising business city; the picture is taken looking east and shows the business center with the leading department store—the Boston Store—on the left.





#### HOOSAC TUNNEL ENTRANCE

This is the western portal of the famous tunnel which gives to North Adams its familiar name "The Tunnel City." The Fitchburg branch of the Boston & Maine Railway connecting Troy, N. Y., with Boston, runs through it double-tracked. The Hoosac Tunnel was begun in 1856 and after many delays the State assumed control of the work and carried it to completion in 1862. It is  $4\frac{3}{4}$  miles long and is the longest tunnel in the United States. Its cost was approximately \$15,000,000.





#### HOPKINS HALL AND COLLEGE BUILDINGS, WILLIAMSTOWN

Williamstown is the college town of the Berkshires. Williams College was founded by Col. Emphriam Williams, a land and sea veteran of the French Colonial wars. Various noted Americans have later contributed to its endowment. The original buildings were four in number North, South, East and West; to these have been added many imposing structures, Morgan Hall, Jessup Hall and the Thompson Memorial Chapel, probably the finest College Chapel in America. The main recitation building, Hopkins Hall, is named after Mark Hopkins, the College's most famous president. In 1808, the first Foreign Missionary Society in America was founded by students of Williams College—the Haystack Monument commemorating the event was unveiled a few years ago. Its present president is James A. Garfield, eldest son of the late President Garfield.



#### GREYLOCK MOUNTAIN

This view of the Mountain is taken from the town of Adams and shows most distinctly the "slides" or rifts made in the Mountain side by the cloudburst which almost inundated the town of Adams. Greylock is the highest mountain in Massachusetts and the second highest in New England; it rises 3505 feet above the sea level and 2700 feet above the Adams valley at its easterly base. A large part of the mountain is now a State Reservation, made so in 1898 for the perpetual preservation to the people of its rocky heights. It is easily reached by wagon roads from Pittsfield and North Adams, as well as by several trails, variously from Cheshire Harbor, Adams and Williamstown. The view from the Summit Tower is magnificently comprehensive, embracing a radius of sixty miles in every direction.





H 73 78 544 °









F3B 78

N MANCHESTER,  
INDIANA

LIBRARY OF CONGRESS



0 012 608 633 7

